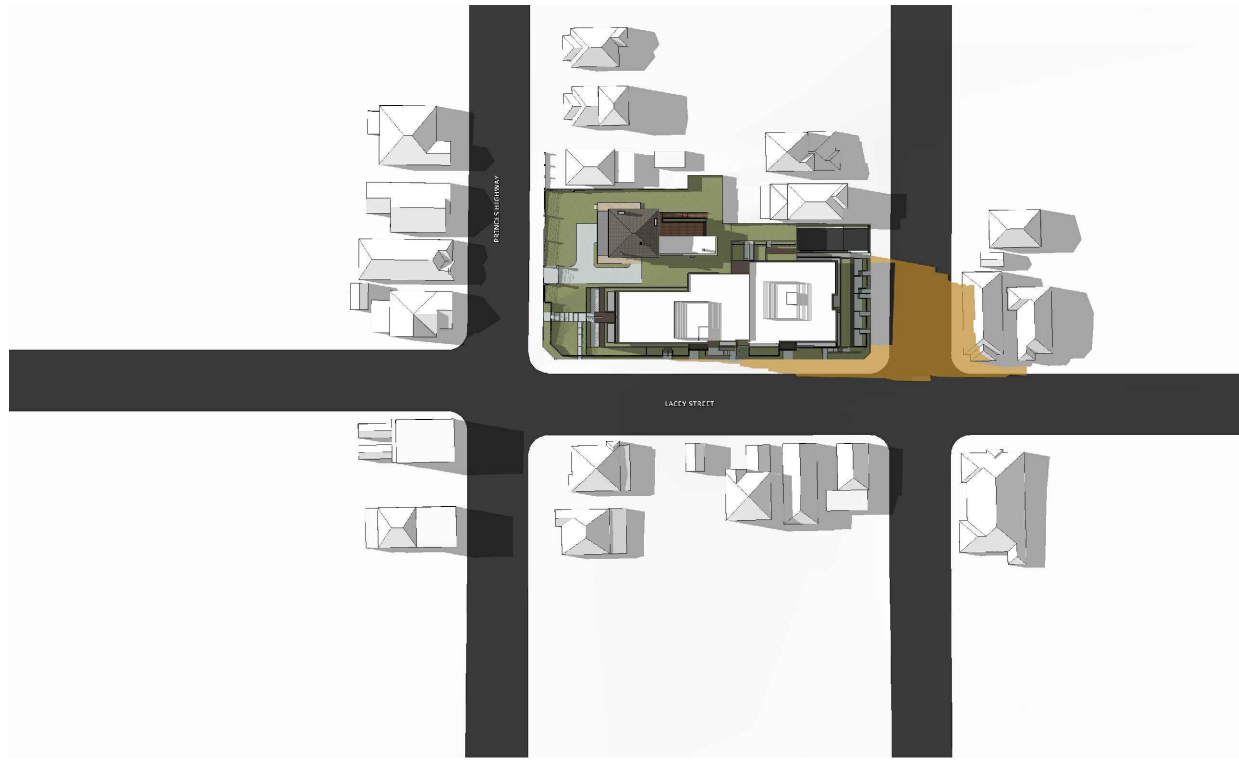
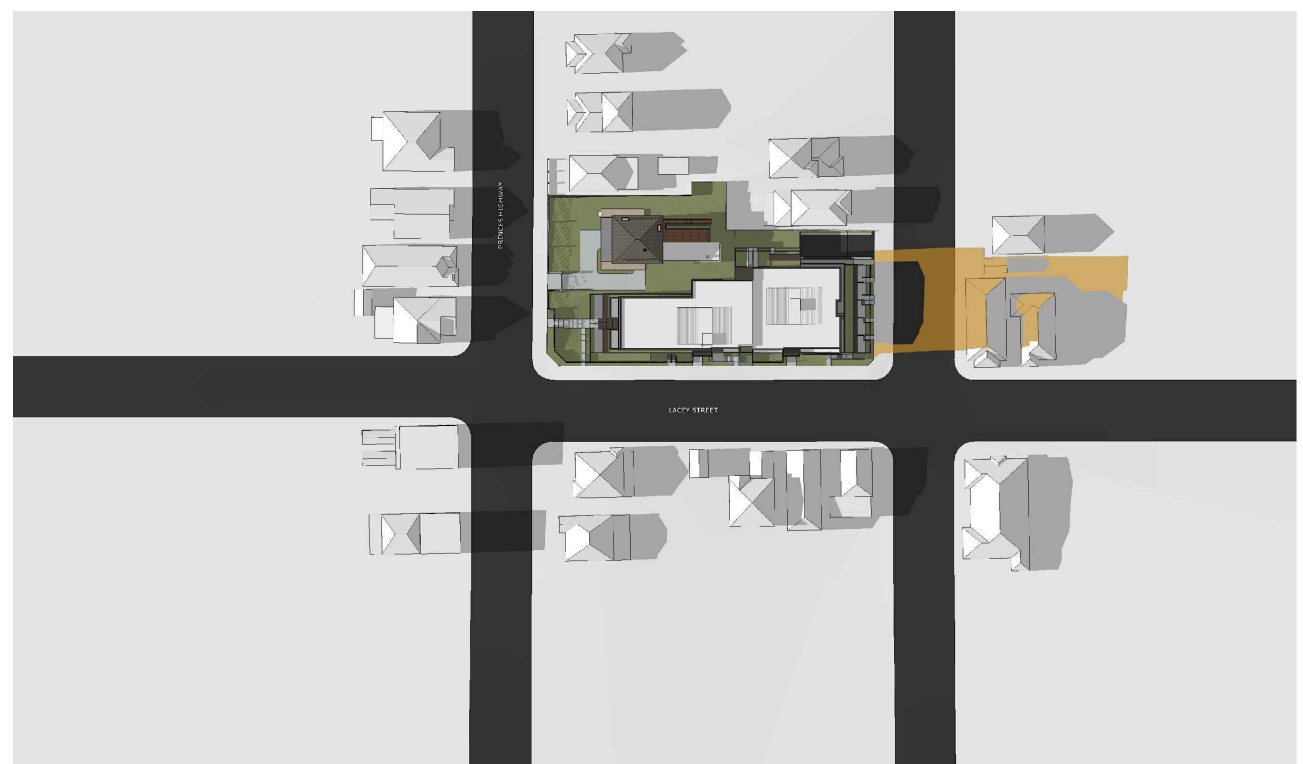


5 21ST JUNE - 1PM
NTS



6 21ST JUNE - 2PM
NTS



7 21ST JUNE - 3PM
NTS

LEGEND
 OUTLINE OF SHADOW CAST BY PROPOSED DEVELOPMENT
 SHADOW CAST BY EXISTING BUILDINGS

GENERAL NOTES:
 • ALL WORKS TO COMPLY WITH BUILDING CODE OF AUSTRALIA, REQUIREMENTS OF RELEVANT STATUTORY AUTHORITIES/ LOCAL GOVERNMENT & RELEVANT AUSTRALIAN BUILDING STANDARDS
 • CONTRACTOR TO VERIFY ALL DIMENSIONS ON SITE BEFORE COMMENCING WORK- SHOULD A DISCREPANCY BE IDENTIFIED PLEASE CONFIRM WITH ARCHITECT PRIOR TO PROCEEDING (DO NOT SCALE FROM DRAWINGS)
 • DRAWINGS FOR THE PURPOSES OF DA ONLY - FURTHER CONSULTANT/ AUTHORITY COORDINATION WILL BE REQUIRED AT CC STAGE WHICH MAY IMPACT ON DESIGN AND PLANNING LAYOUTS
 • COPYRIGHT OF DESIGN SHOWN HEREON IS RETAINED BY PBD ARCHITECTS AND AUTHORITY IS REQUIRED FOR ANY REPRODUCTION

LEGEND:
 FH FIRE HYDRANT
 FHR FIRE HOSE REEL
 FS FIRE STAIRS
 MR MECHANICAL RISER TO FUTURE DETAIL
 HW HIGHLIGHT WINDOW
 GC GARBAGE CHUTE
 LS LANDSCAPING (REFER TO LANDSCAPE ARCHITECT'S DRAWINGS)
 MB MAIL BOX TO FUTURE DETAIL
 WT HOT WATER UNITS
 CU A/C CONDENSER UNITS

MATERIALS LEGEND:
 AFG ALUMINIUM FRAMED GLAZING
 BS BATTEN SCREEN (TO FUTURE DETAIL)
 MP METAL PANEL (TO FUTURE DETAIL)
 MC METAL PANEL CLADDING (TO FUTURE SELECTION)
 PS PRIVACY SCREEN (TO FUTURE SELECTION)
 Px PAINT FINISH TYPEX
 TD TIMBER DOOR
 RD METAL ROLLER DOOR
 RW RENDERED WALL/SELECTED PAINT FINISH
 FB BRICKWORK
 RF ROOFING
 TF RECYCLED TIMBER FENCE

ISSUE	DATE	DESCRIPTION
A	2018.10.26	DA LODGEMENT
P1	2018.03.29	PRELIMINARY ISSUE

CLIENT:
 TRULAND DEVELOPMENT PTY LTD

ARCHITECT:
PBD | ARCHITECTS
 ABN 36 147 035 550
 P - 02 9698 8140 E - info@pbdarchitects.com.au W - www.pbdarchitects.com.au
 Level 2, 52 Abillon Street, Surry Hills NSW 2010

PROJECT:
 PROPOSED HERITAGE CONSERVATION AND RESIDENTIAL FLAT BUILDING
 2-6 LACEY STREET KOGARAH BAY & 186-190 PRINCES HIGHWAY, BEVERLEY PARK NSW 2217

MARCH 2018
 DRAWING TITLE:
SHADOW DIAGRAM
 21st JUNE (1PM - 3PM)

SCALE: NTS	DRAWING NO: DA611	ISSUE: A
PROJECT NO: 1809		